

## Double Girder Wire Rope Hoist 20 tons M6 class Service

### Características Esenciales

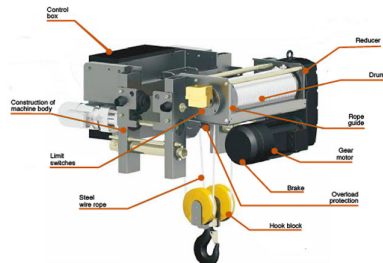


- Equipo de Doble Velocidad, Doble viga. Servicio Heavy Duty H4/M5.
- Dispositivos de Límite de alta precisión, Protección de Sobrecarga y Protección térmica
- Componentes de alta calidad, Motor SEW Eurodrive, VDF Schneider, contactores Eaton/Schneider
- Estándares US y EC ASME HST-1 , ASME B30.16 , ASME B30.17 , EN14492-2 , EN60204-32.

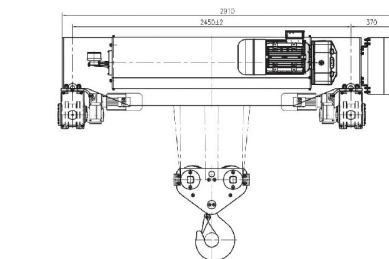
### Especificaciones Técnicas

|                               |                                  |   |  |
|-------------------------------|----------------------------------|---|--|
| Capacidad de Carga            | 20 t                             | Altura de Izaje Estandar (Customizable) | 50 ft / 15 m   |
| Velocidad /min                | 0.8 ft / 3.3 m                   | Numero de Velocidades                   | 2 Speed  |
| Voltaje                       | 3 Phase 208~240/440~480V 50/60Hz | Clase de Servicio                       | H4/M6/3m/Class D   |
| Tipo de Motor                 | Squirrel Cage Induction Motor    | Freno Motor                             | Electromagnetic Release Brake >125%                        |
| Grado de Aislacion            | F                                | Protección IEC Motor                    | IP55   |
| Protección Tablero de Control | IP65                             | Control                                 | Pendant Control and Optional Wireless F21                  |
| Voltaje del Control           | 48V                              | Marca Motor de Izaje                    | Sew Eurodrive  |
| Reductor de Izaje             | Sew Eurodrive FA                 | Tipo Transmisión / Reductor             | Sew Eurodrive  |
| Humedad                       | <85%                             | Temperatura                             | -4°~104° F / -20°~40° C                                    |
| Potencia del Trolley          | 1.2 kw x 2                       | Nivel de Ruido                          | 82 dB  |
| Velocidad del Trolley /min    | 16 ~ 65 ft/min. / 5 ~ 20 m/min   | Normas                                  | ASME HST-4 , ASME B30.16 , B30.17 , EN14492-2 , EN60204-32 |
| Garantía                      | 3 Year                           | Hoist Contactor Brand                   | Schneider or EATON   |

### MODULE DESIGN FLEXIBLE COMBINATION



| Model/Modelo                                  | PWRHE20TM6B    |
|---|----------------|
| <b>Power / Potencia</b>                       | 5/20 kW        |
| <b>Rotation Speed / Velocidad de Rotación</b> | 710/2880 n/min |
| <b>Insulation / Aislamiento</b>               | F              |
| <b>Protection Grade / Grado de Protección</b> | IP54           |
| <b>ED rate</b>                                | 40%            |
| <b>Power / Potencia</b>                       | 1.2kWx2        |
| <b>Rotation Speed / Velocidad de Rotación</b> | 32 n/min       |
| <b>Insulation / Aislamiento</b>               | F              |
| <b>Protection Grade / Grado de Protección</b> | IP54           |
| <b>ED rate</b>                                | 40%            |
| <b>Order Gauge / Calibre de Viga</b>          | 2450mm         |



**DRIVE TECHNOLOGY**  
SEW Eurodrive high performance Motor, reducer and brake. Compact design, light weight, low energy consumption, low noise and eco-friendly design. Electromagnetic brake disc (Adbestos-free). Long Service life and easy maintenance.



**OVERLOAD PROTECTION**  
Load Cell connected to a Limit Relay (Adjustable) to avoid overloading of the hoist.



**WIRE ROPE GUIDE**  
Helps the winding of the rope on the drum. Light weight and highly resistance. Design to reduce friction on the wire rope and avoid premature wear.



**HIGH PERFORMANCE WIRE ROPES**  
High performance wire rope with tensile strength up to 2185Mpa. Galvanized surface and high flexibility to ensure long service life.



**DRUM**  
Q345 steel, seamless grooved drum. Design to fulfil FEM and ASME standards and ensure a safe operation.



**LIMIT SWITCHES**  
High precision adjustable height limit switches, for all movements of hoist and trolley.



**LIFTING HOOK GROUP**  
DIN standard lifting hook with safety clasp. Forged by the high-strength material of T grade.



**CONTROL BOX**  
Electric Control box with Schneider Inverter, Eaton contactors and components. Compact design, easy access, IP65 Enclosure.

Referential Images  
Specifications may change without notice

#### Compact structure, light weight but with high strength, precise positioning to improve the working efficiency.

Prowinch wire rope hoist adopt European design the mechanical structure is compact and strong but with light weight and small size. For single girder type hoist, low headroom is the standard feature, which means can cover larger room and height on working site. For double girder type hoist, the Wheel pressure is small and can be customized by different girder span our wire rope hoist with dual speed as standard on lifting & travelling, compared with single speed hoist. It will bring good performance on positioning, and will improve the working efficiency absolutely.

#### Modular design and multiple options can meet various demands of customer

Prowinch concept of modular design has always been throughout the whole product design which ensures the standard and interchangeability of parts greatly reduces the maintenance costs of products. All products series of Prowinch provided with complete set of spare parts and professional service team measures to provide after-sales service to solve the problems from customers in time.

#### High quality mechanical & electronic components can ensure good working performance

Prowinch select every component seriously no matter to the mechanical parts like motors, brakes and Steel wire rope or the electronics as inverter, contactors, and relay. High quality components are always the basic rule for every good products. We believe that only the good quality components integrated together can ensure the good working performance as complete machine.

#### Low operation cost. Green energy and environment friendly

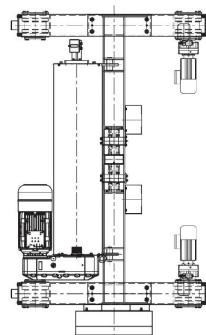
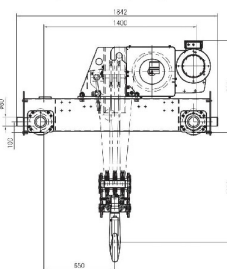
Prowinch wire rope hoist with same desing crane can significantly reduce self-weight of complete system and decrease the total power consumption which almost save 30% power every year on average compared with other domestic products. Meanwhile the running noise is lower than national standard which can create a quiet and comfort working environment.

#### Safe and reliable, running monitoring and simple and convenient maintenance

Prowinch Technology product is provided with varios functions such monitoring protection which can make detailed records of running condition of electric hoist running status of motor and safety working cycle, and provide warning in advance. All records can provide data for maintenance and the root of problems should be understood to be able to provide maintenance much more likely and efficiently.

#### High Production Efficiency Improved by Precise positioning

Prowinch wire rope hoist with double lifting speed as standard configuration and transitional speed control of trolley ensure the efficient running of crane in workshop and ensure the plans of customers can be implemented as Schedule. By the frequency conversion technology it can reduce waving of loads which makes the positioning more quickly and accurately. Meanwhile it can reduce the impact on whole machine when start or braking more smooth and safe when operation.



## Peso & Dimensiones

**Peso Total**

5512 lbs / 2501 Kg

Referential Images / Imágenes Referenciales

Specifications may change without notice / las especificaciones pueden cambiar sin previo aviso